



EN

Permanent conditioning colouring cream for hair that works in 9 minutes.

DIAGNOSIS Carry out a technical diagnosis of the hair, establishing: • the natural level • the % of greys • the hair type: thickness – porosity – resistance – density – elasticity • the desired result.

PREPARATION 1+1 In a non-metallic bowl, pour 1 part colouring cream **milk_shake® 9 minutes quick conditioning permanent hair colour** and add 1 part **milk_shake® oxidizing emulsion 10 vol. 3%, 20 vol. 6%, 30 vol. 9%, 40 vol. 12%** (e.g. 50 ml **milk_shake® 9 minutes quick conditioning permanent hair colour** + 50 ml **milk_shake® oxidizing emulsion**).

HIGH LIFTERS 1+2 In a non-metallic bowl, pour 1 part colouring cream **milk_shake® 9 minutes quick conditioning permanent hair colour** and add 2 parts **milk_shake® oxidizing emulsion 40 vol. 12%** (e.g. 50 ml **milk_shake® 9 minutes quick conditioning permanent hair colour** "high lifter" + 100 ml **milk_shake® oxidizing emulsion 40 vol. 12%**).

FORMULATION / PROCESSING TIME

To darken	oxidizing emulsion 10 vol. 3%	9 min
To lift 1 level and for grey coverage	oxidizing emulsion 20 vol. 6%	9 min
To lift 2 levels and for grey coverage	oxidizing emulsion 30 vol. 9%	9 min
To be combined with the ultra blond series for lifting up to 3 levels	oxidizing emulsion 40 vol. 12%	20 min

APPLICATION Apply **milk_shake® colour specifics powerful protector** to the hairline. Wear protective gloves and apply the blend to dry, unwashed hair. (Only in the case of very oily hair or styling product residue, shampoo before colour application).

TYPE OF SERVICE **Colour touch-up:** apply the blend to natural regrowth only and leave in for 9 minutes. To refresh colour on lengths and ends, according to the level on the hair and the desired result, choose to apply a shade from the **milk_shake® 9 minutes quick conditioning permanent hair colour** or **milk_shake® creative permanent colour** or **milk_shake® smoothies conditioning semi permanent colour** or **milk_shake® conditioning direct colour** respecting the processing time of 9 minutes. **Colour touch-up with ultra blonds:** apply the blend to natural regrowth area only and leave in for 20 minutes.

RINSE Once the processing time is complete, emulsify the colour in the hair with water to remove any colour residue from the hair, rinse well, then apply **milk_shake® colour specifics acid colour sealer**, distribute and leave in for 3 min. Without rinsing, cleanse the hair using **milk_shake® colour sealing shampoo**, then condition using **milk_shake® colour sealing conditioner**.

IT

Crema colorante condizionante permanente per capelli che agisce in 9 minuti.

DIAGNOSI Eseguire una diagnosi tecnica stabilendo: • il livello naturale • la % di capelli bianchi • la tipologia di capelli: corpo – porosità – tenacità – densità – elasticità • il risultato desiderato.

PREPARAZIONE 1+1 In una ciotola non metallica, versare 1 parte di crema colorante **milk_shake® 9 minutes quick conditioning permanent hair colour** e aggiungere 1 parte di **milk_shake® oxidizing emulsion a 10 vol. 3%, 20 vol. 6%, 30 vol. 9%, 40 vol. 12%** (es. 50 ml di **milk_shake® 9 minutes quick conditioning permanent hair colour** + 50 ml di **milk_shake® oxidizing emulsion**).

PREPARAZIONE HIGH LIFTERS 1+2 In una ciotola non metallica, versare 1 parte di crema colorante **milk_shake® 9 minutes quick conditioning permanent hair colour** e aggiungere 2 parti di **milk_shake® oxidizing emulsion a 40 vol. 12%** (es. 50 ml di **milk_shake® 9 minutes quick conditioning permanent hair colour** "high lifter" + 100 ml di **milk_shake® oxidizing emulsion 40 vol. 12%**).

FORMULAZIONE / TEMPI DI POSA

Per scurire	oxidizing emulsion 10 vol. 3%	9 min
Per schiariture di 1 livello e per la copertura dei capelli bianchi	oxidizing emulsion 20 vol. 6%	9 min
Per schiariture di 2 livelli e per la copertura dei capelli bianchi	oxidizing emulsion 30 vol. 9%	9 min
Da abbinare alla serie ultra biondi per schiariture fino a 3 livelli	oxidizing emulsion 40 vol. 12%	20 min

APPLICAZIONE Applicare su tutto il contorno della capigliatura **milk_shake® colour specifics powerful protector**. Indossare i guanti ed applicare la miscela sui capelli asciutti e non lavati. (Solo nel caso i capelli siano eccessivamente grassi o vi sia presente una quantità eccessiva di prodotti di styling, lavarli previamente).

TIPOLOGIA DI SERVIZIO **Ritocco:** applicare la miscela soltanto sulla ricrescita naturale e lasciare in posa per 9 minuti. Per rinfrescare il colore sulle lunghezze e punte, in funzione del livello presente sui capelli e dell'obiettivo desiderato, scegliere di applicare una tra le colorazioni **milk_shake® 9 minutes quick conditioning permanent hair colour** oppure **milk_shake® creative permanent colour** oppure **milk_shake® smoothies conditioning semi permanent colour** oppure **milk_shake® conditioning direct colour** cercando di rispettare il tempo di posa di 9 minuti. **Ritocco con la serie ultra biondi:** applicare la miscela soltanto sulla ricrescita naturale e lasciare in posa per 20 minuti.

RISCIACQUO Al termine del tempo di posa, emulsionare bene il colore con acqua per rimuovere ogni residuo dai capelli quindi risciacquare abbondantemente, applicare **milk_shake® colour specifics acid colour sealer**, massaggiare e lasciare agire 3 min. Senza risciacquare, effettuare uno shampoo con **milk_shake® colour sealing shampoo**, quindi applicare il condizionatore **milk_shake® colour sealing conditioner**. Risciacquare e procedere allo styling desiderato.

ES

Crema colorante acondicionante permanente para el cabello que actúa en 9 minutos.

EL DIAGNÓSTICO Realizar un diagnóstico técnico estableciendo: • el nivel natural • el % de canas • la tipología del cabello: cuerpo – porosidad – tenacidad – densidad – elasticidad • el resultado deseado.

PREPARACIÓN 1+1 En un bol no metálico, verter 1 parte de crema colorante **milk_shake® 9 minutes quick conditioning permanent hair colour** y añadir 1 parte de **milk_shake® oxidizing emulsion a 10 vol. 3%, 20 vol. 6%, 30 vol. 9%, 40 vol. 12%** (es. 50 ml de **milk_shake® 9 minutes quick conditioning permanent hair colour** + 50 ml de **milk_shake® oxidizing emulsion**).

PREPARACIÓN HIGH LIFTERS 1+2 En un bol no metálico, verter 1 parte de crema colorante **milk_shake® 9 minutes quick conditioning permanent hair colour** y añadir 2 partes de **milk_shake® oxidizing emulsion a 40 vol. 12%** (es. 50 ml de **milk_shake® 9 minutes quick conditioning permanent hair colour** "high lifter" + 100 ml de **milk_shake® oxidizing emulsion 40 vol. 12%**).

FORMULACIÓN / TIEMPO DE POSE

Para oscurecer	oxidizing emulsion 10 vol. 3%	9 min
Para aclarar un nivel y para la cobertura de canas	oxidizing emulsion 20 vol. 6%	9 min
Para aclarar dos niveles y para la cobertura de canas	oxidizing emulsion 30 vol. 9%	9 min
Para mezclar con la serie de los súper-acclarantes y para aclarar hasta 3 niveles	oxidizing emulsion 40 vol. 12%	9 min

APLICACIÓN Aplicar en todo el contorno del cabello, **milk_shake® colour specifics powerful protector**. Ponerse los guantes y aplicar la mezcla sobre el cabello seco y no lavado (lavar previamente solo en el caso de cabellos excesivamente grasos o si presentan una cantidad excesiva de productos de styling).

TIPOLOGÍA DE SERVICIO **Retoque:** aplicar la mezcla en el área de crecimiento natural y dejar actuar durante 9 minutos. Para refrescar el color sobre el largo y las puntas, en función del nivel presente sobre el cabello y del objetivo deseado, escoger la aplicación de una de nuestras coloraciones **milk_shake® 9 minutes quick conditioning permanent hair colour** o bien, **milk_shake® creative permanent colour** o bien, **milk_shake® smoothies conditioning semi permanent colour** o bien, **milk_shake® conditioning direct colour** tratando de respetar el tiempo de pose de 9 minutos. **Retoque con la serie Súper-Aclarantes:** aplicar la mezcla en el área del crecimiento natural y dejar actuar durante 20 minutos.

ACLARADO Al finalizar el tiempo de pose, emulsionar bien el color con agua para remover cada residuo del cabello y después aclarar abundantemente, aplicar **milk_shake® colour specifics acid colour sealer**, masajear y dejar actuar durante 3 min. Sin aclarar, efectuar un lavado con **milk_shake® colour sealing shampoo**, después aplicar el acondicionador **milk_shake® colour sealing conditioner**.

FR

Crème colorante conditionnante permanente qui agit en 9 minutes.

LE DIAGNOSTIC Effectuer un diagnostic technique en établissant: • le niveau de la base naturelle • le % de cheveux blancs • le type de cheveux: corps – porosité – ténacité – densité – élasticité • le résultat souhaité.

PREPARATION 1+1 Dans un bol non métallique, versez 1 dose de crème colorante **milk_shake® 9 minutes quick conditioning permanent hair colour** et ajoutez 1 dose d'oxydant **milk_shake® oxidizing emulsion à 10 vol. 3%, 20 vol. 6%, 30 vol. 9%, 40 vol. 12%** (par exemple 50 ml de **milk_shake® 9 minutes quick conditioning permanent hair colour** + 50 ml d'oxydant **milk_shake® oxidizing emulsion**).

PREPARATION SUPER ÉCLAIRCISSANT 1 + 2 Dans un bol non métallique, versez 1 dose de crème colorante **milk_shake® 9 minutes quick conditioning permanent hair colour** et ajoutez 2 parties d'oxydant **milk_shake® oxidizing emulsion à 40 vol. 12%** (par exemple 50 ml de **milk_shake® 9 minutes quick conditioning permanent hair colour** "high lifter" + 100 ml d'oxydant **milk_shake® oxidizing emulsion à 40 vol. 12%**).

FORMULATION / TEMPS DE POSE

Pour foncer	oxidizing emulsion 10 vol. 3%	9 min
Pour éclaircir d'un niveau et pour couvrir les cheveux blancs	oxidizing emulsion 20 vol. 6%	9 min
Pour éclaircir sur deux niveaux et pour couvrir les cheveux blancs	oxidizing emulsion 30 vol. 9%	9 min
À utiliser avec la série des super éclaircissants pour éclaircir jusqu'à 3 niveaux	oxidizing emulsion 40 vol. 12%	9 min

APPLICATION Appliquer **milk_shake® colour specifics powerful protector** sur tout le contour de la ligne des cheveux. Mettre des gants et appliquer le mélange sur cheveux secs et non lavés. (laver au préalable seulement si les cheveux sont trop gras ou s'il y a une quantité excessive de produits coiffants).

TYPE DE SERVICE **Retouche:** appliquer le mélange uniquement sur repousse naturelle et laisser agir 9 minutes. Pour rafraîchir la couleur sur les longueurs et les pointes, en fonction du niveau des cheveux et du résultat souhaité, appliquer une de nos couleurs **milk_shake® 9 minutes quick conditioning permanent hair colour** ou **milk_shake® creative permanent colour** ou **milk_shake® smoothies conditioning semi permanent colour** ou **milk_shake® conditioning direct colour** en essayant de respecter le temps d'exposition de 9 minutes. **Retouche avec la série super-éclaircissant:** appliquer le mélange uniquement sur repousse naturelle et laisser agir 20 minutes.

RINÇAGE A la fin du temps d'exposition, bien émulsionner la couleur avec de l'eau afin de bien éliminer tout résidu de cheveux puis rincer abondamment, appliquer le produit **milk_shake® colour specifics acid colour sealer**, masser et laisser agir 3 min. Sans rincer, appliquez un shampooing avec le **milk_shake® colour sealing shampoo** puis appliquer **milk_shake® colour sealing conditioner**.

ALL SWATCHES ARE FULL-STRENGTH FORMULAS ON 90% WHITE HAIR. RESULTS WILL VARY BASED ON THE LEVEL OF HAIR TO WHICH IT IS APPLIED. / OGNI CIOCCA È IL RISULTATO DELLA FORMULA SU CAPELLI CON UN 90% DI BIANCHI. I RISULTATI VARIANO A SECONDA DEL LIVELLO DI PARTENZA. / CADA MECHA ES EL RESULTADO DE LA FÓRMULA SOBRE UN CABELLO CON EL 90% DE CANAS. LOS RESULTADOS VARIAN SEGÚN EL NIVEL DEL QUE SE PARTE. / CHAQUE MÊCHE EST LE RÉSULTAT DE FORMULES INTENSIVES SUR CHEVEUX AVEC 90% DE CHEVEUX BLANCS. LES RÉSULTATS VARIERONT EN FONCTION DU NIVEAU DE BASE DES CHEVEUX SUR LEQUEL IL EST APPLIQUÉ.

zoneconceptprofessional | zoneconceptofficial @ | info@z-oneconcept.com | z-oneconcept.com

z.one concept® z.one concept s.r.l. Via Brodolini, 30 - 21046 Malnate (VA) - ITALY - T. +39 0332 425747 - www.z-oneconcept.com Z110MATM2128



**milk
shake®**
9 minutes

quick conditioning
permanent hair colour

MORE NATURAL



ASH



BEIGE



PURE GOLD



COPPER



MAHOGANY



RED



VIOLET



MOKA



COFFEE



CHOCOLATE



HIGH LIFTER

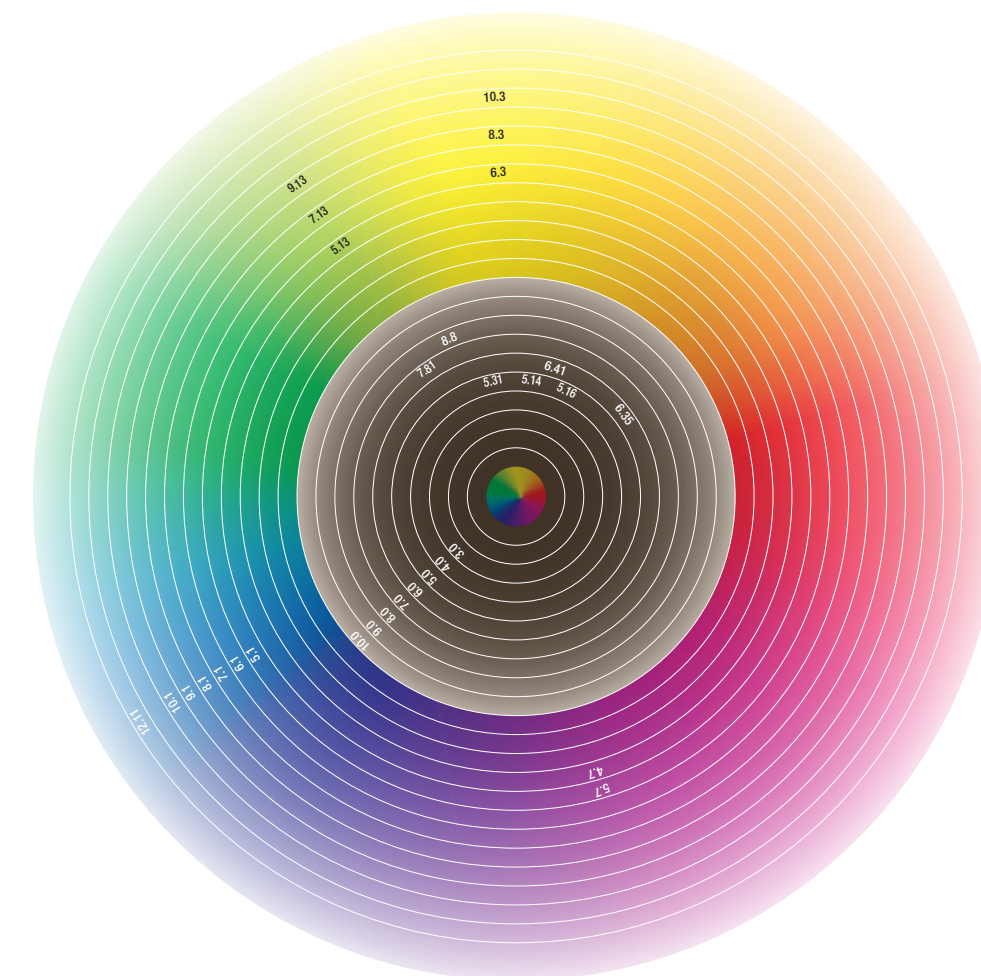


SPECIAL



milk shake
9 minutes

newton's disk



REFERENCE			
.0 N	NATURAL	.3 G	GOLD
.1 A	ASH	.4 C	COPPER
.13 AG	BEIGE	.5 M	MAHOGANY
.6 R	RED	.7 V	VIOLET
		.8 B	MOKA